



**HuProTec**  
HUMAN PROTECTION TEC  
SWITZERLAND

# ATMOSPHERIC WATER HARVESTING PLANT



## Need drinking water for 100.000 people and more?

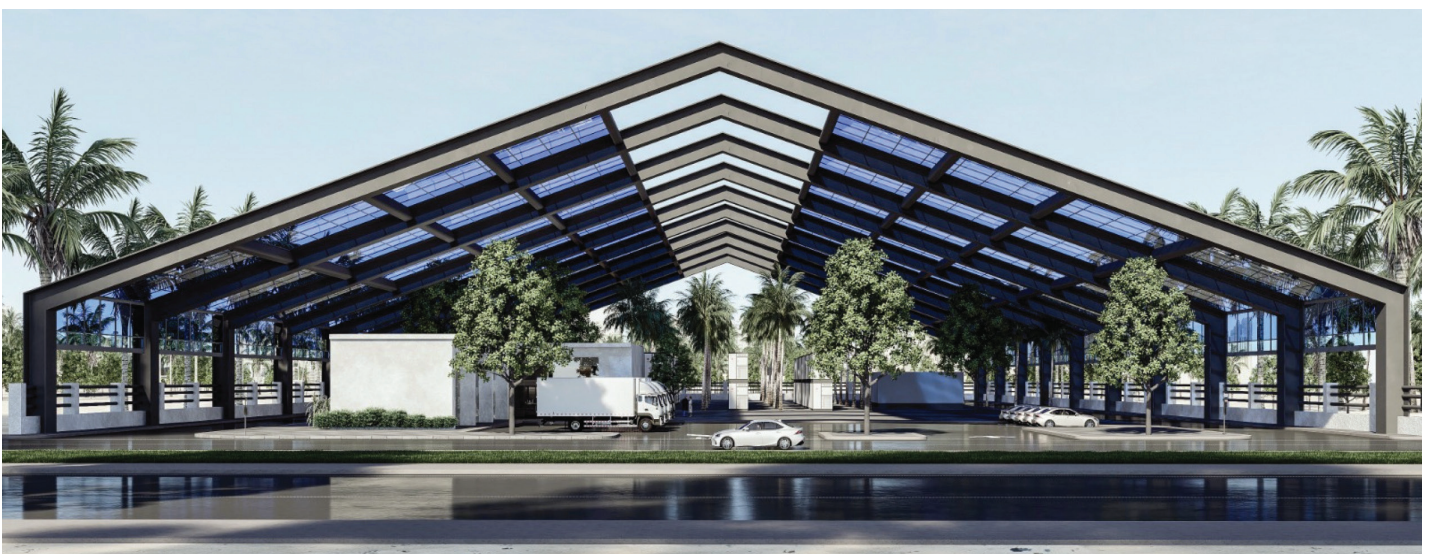
Welcome to the **HuProTec Water Station, "ALPHA"** the world's first atmospheric water station.

This station generates up to 250,000 liters of potable water daily from air humidity. Let's explore the features and specifications of this remarkable water station. The HuProTec Water Station comprises 50 units of the HuProTec, HPT3000, Atmospheric Water generators, arranged within a space measuring 90 meters wide and 160 meters

long, totaling 14,400 square meters of land.

This station can extract water from the air even with as little as 25% relative humidity and at temperatures as low as 15 degrees Celsius.

**ALPHA** derives its substantial energy from our patented 2.3-megawatt solar solution, which powers the entire operation. It reigns supreme as **the world's largest atmospheric water station in terms of its unparalleled capacity.**



**WATERSTATION "ALPHA" PURE, FRESH,  
MINERALIZED, SELF-SUFFICIENT**



**This world first in the energy sector saves 100% of the ongoing energy costs during operation!**

### Highlights of our plant

- Up to 250.00 litres drinking water per day
- Energy plant for 2.3 Megawatt Selfsufficient
- Solar panels operable from  $-40^{\circ}$  to  $+140^{\circ}$  Celsius temperatures
- Non-toxic panel material
- Non-toxic batteries
- Stainless-steel watertank with special protective coating
- State-of-the-art controlcenter

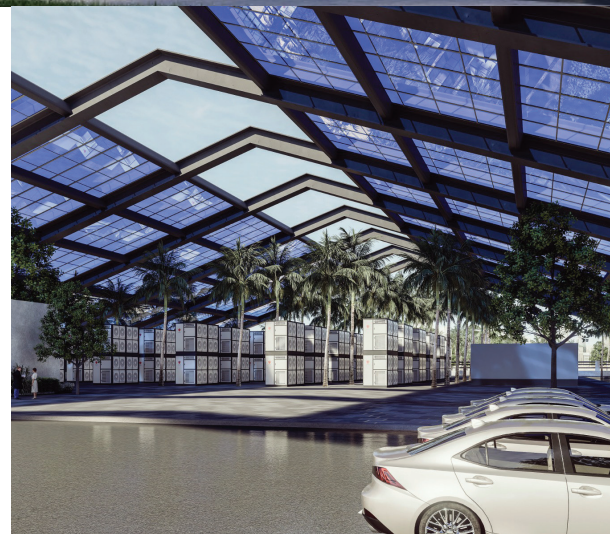
### Planning overview

- Beton plate as underground-floor for the hall
- Open hall construction (steel)
- Controlcenter (separate construction in the hall)
- 1'000'000L Water tank underground
- AWG's (water harvesting)
- Sanitarian plant for water (tubes, pumps, etc.)
- Electric plant for AWG's, Controlcenter, etc.
- Solar panels, batteries (production and storage of the energy)

### Expandable (not inkl.)

The plant can be extended with:

- a direct connection of a water pipeline
- a terminal for water tankers
- a connection to a filling plant for water bottles



### Contact us

HuProTec Ltd. | Kemptpark 13 CH-8310 Kempththal | [info@huprotec.com](mailto:info@huprotec.com) | +41 41 55 222 55